

Public Works Department

Sanitary Sewer & Stormwater Systems

Grant Funded Projects Update



GRANT FUNDING



Grant/Project	Funding	Funding Type	Notes
Stormwater Repairs (HA017)	\$ 10,000,000	FDEP Grant (SB4A)	Bidding Underway
Middle Gulf Drive Force Main Replacement (HA018)	\$ 2,186,000	FDEP Grant (SB4A)	Design Underway; Construction Start in FY26.
Effluent Disposal Pond Apple Site Repairs (HA034)	\$ 253,000	FDEP Grant (SB4A)	Design Underway; Construction Start in FY25.
Reuse System Repairs (HA035)	\$ 156,000	FDEP Grant (SB4A)	Tank repair work complete; Grant reimbursement in progress.
Wastewater Collection System Repairs (HA036)	\$ 10,000,000	FDEP Grant (SB4A)	Design Underway; Construction Start in FY25.
Lift Station Control Panels (HA037)	\$ 9,936,341	FDEP Grant (SB4A)	Design Underway; Construction Start in FY25
Lift Station Control Panels	?	FEMA Public Assistance	Funding amount undetermined.
Lift Station Control Panel Repair and Flood Improvements	?	FEMA HMGP	Requires 25% City Match; Funding amount undetermined.
Resilience	?	TBD	Future Grant

Middle Gulf Drive Force Main Replacement

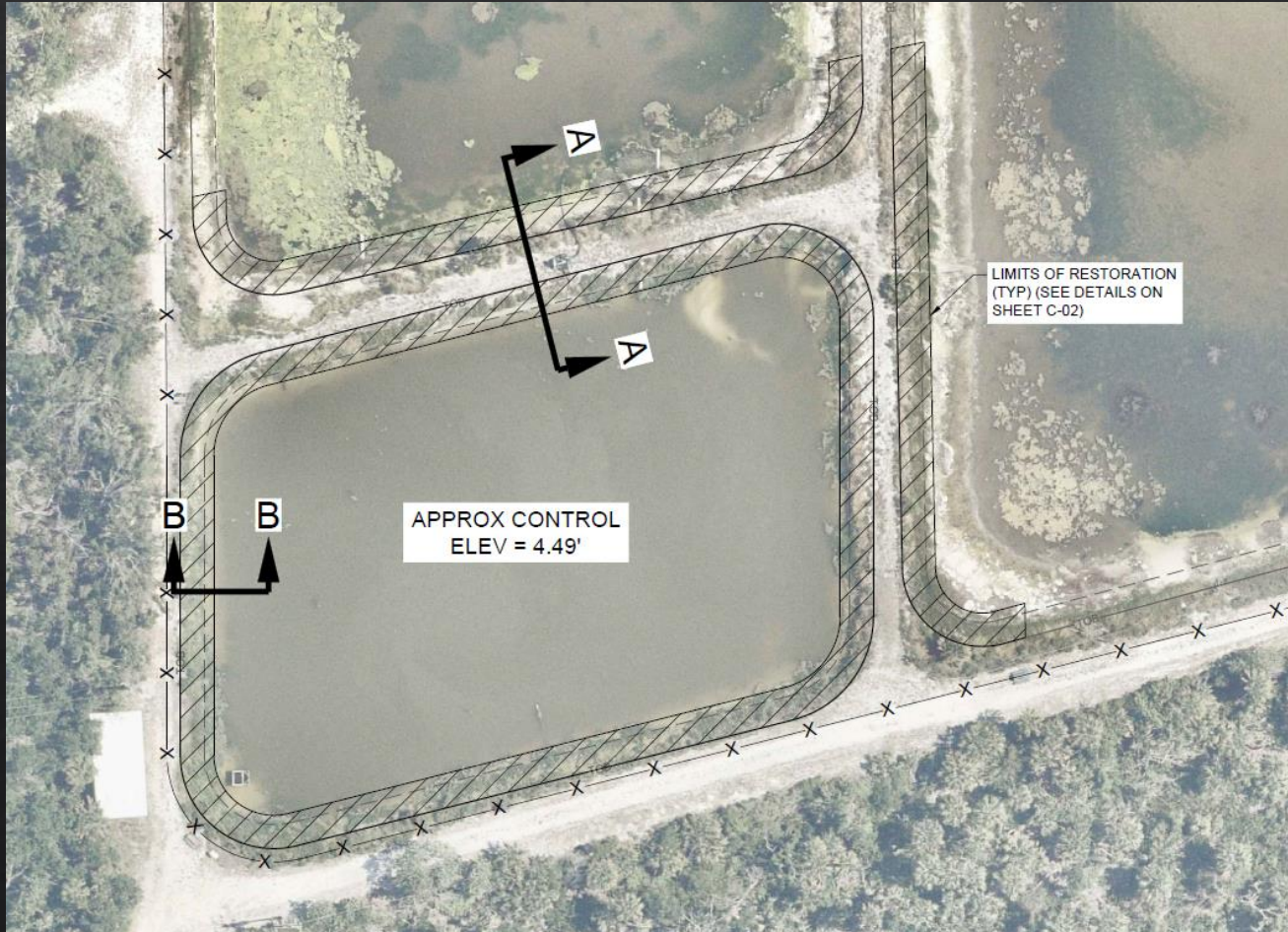
FDEP GRANT HA018 \$2,186,000



- EXISTING 12-INCH WASTEWATER FORCE MAIN HAS INSUFFICIENT CAPACITY
- DEFICIENCY IDENTIFIED IN CAPTIVA WASTEWATER TRANSMISSION STUDY
- A PARALLEL 16-INCH OR 20-INCH FORCE MAIN WILL BE CONSTRUCTED
- DESIGN UNDERWAY;
CONSTRUCTION START IN FY26

Effluent Disposal Pond Apple Site Repairs

FDEP GRANT HA034 \$253,000



- HURRICANE IAN DAMAGED ACCESS ROADS – SOIL AND FENCING ERODED INTO PONDS
- DAMAGED SECTIONS WILL BE RECONTOURED AND REINFORCED WITH RIPRAP/COCONUT MAT/GEOGRID
- CONTRACTOR TO MAINTAIN IRRIGATION WATER FLOW TO DUNES GOLF COURSE PUMPING STATION
- DESIGN UNDERWAY; CONSTRUCTION START IN FY25

Reuse System Repairs

FDEP GRANT HA035 \$156,000

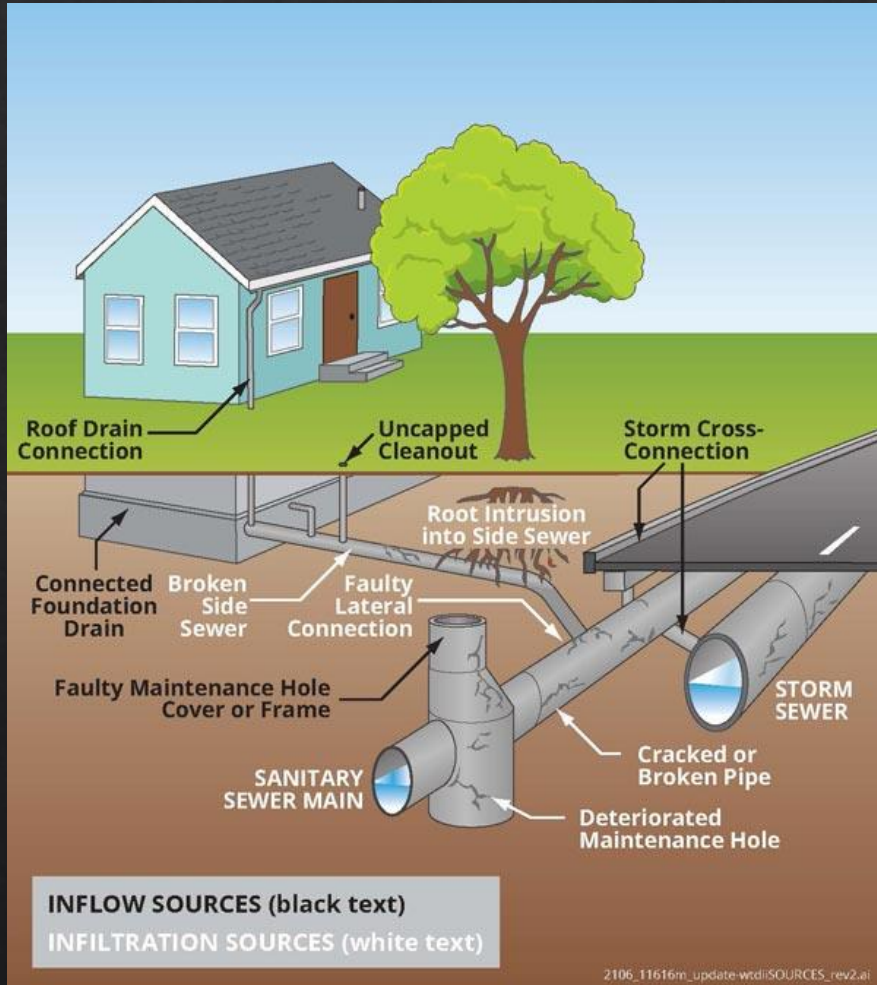


- WULFERT WWTP 528,000 GALLON RECLAIMED WATER STORAGE TANK CONSTRUCTED IN 1990
- TANK IS THE SOLE SOURCE OF IRRIGATION STORAGE FOR THE SANCTUARY GOLF COURSE
- STORES RECLAIMED WATER PRODUCED BY THE DONAX WRF & SANCTUARY GOLF COURSE'S WELL WATER
- TANK REPAIR WORK COMPLETE; GRANT REIMBURSEMENT IN PROGRESS

Wastewater Collection System Repairs

FDEP GRANT HA036 \$10,000,000

Sanitary Sewer Collection System



- DAMAGED SANITARY SEWER LATERALS
- STRUCTURE DEMOLITIONS RESULTING IN UNCAPPED LATERAL CONNECTIONS
- INCREASED INFILTRATION AND INFLOW (I&I) DURING HEAVY RAIN EVENTS AND TIDAL SURGE
- STAFF PRIORTIY TO CORRECT SYSTEM DEFECTS
- DESIGN UNDERWAY;
CONSTRUCTION START IN FY25

Wastewater Collection System Repairs

FDEP GRANT HA036 \$10,000,000

Donax Water Reclamation Facility (WRF)



- STORM SURGE AT DONAX WRF MEASURED AT 11.88' NGVD – 6.00 NGVD = (ABOUT 5 FT DEEP)
- DAMAGE TO STRUCTURES, UNDERGROUND WIRING, MOTORS, FLOW TRANSMITTERS, ACTUATED VALVES, ELECTRICAL DISCONNECTS AND CONTROL PANELS
- ELECTRICAL SYSTEM REPAIRS FUNDED BY INSURANCE UNDERWAY NOW
- DESIGN OF ADDITIONAL IMPROVEMENTS APPROVED BY COUNCIL 1/14/25; CONSTRUCTION START IN FY26

Lift Station Control Panels

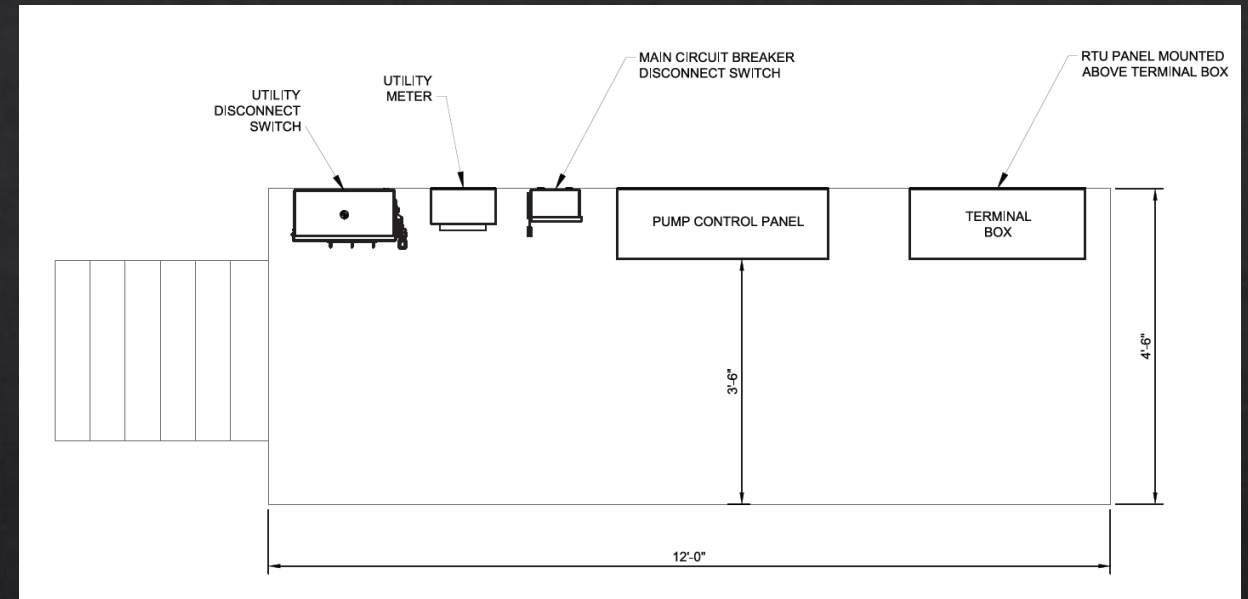
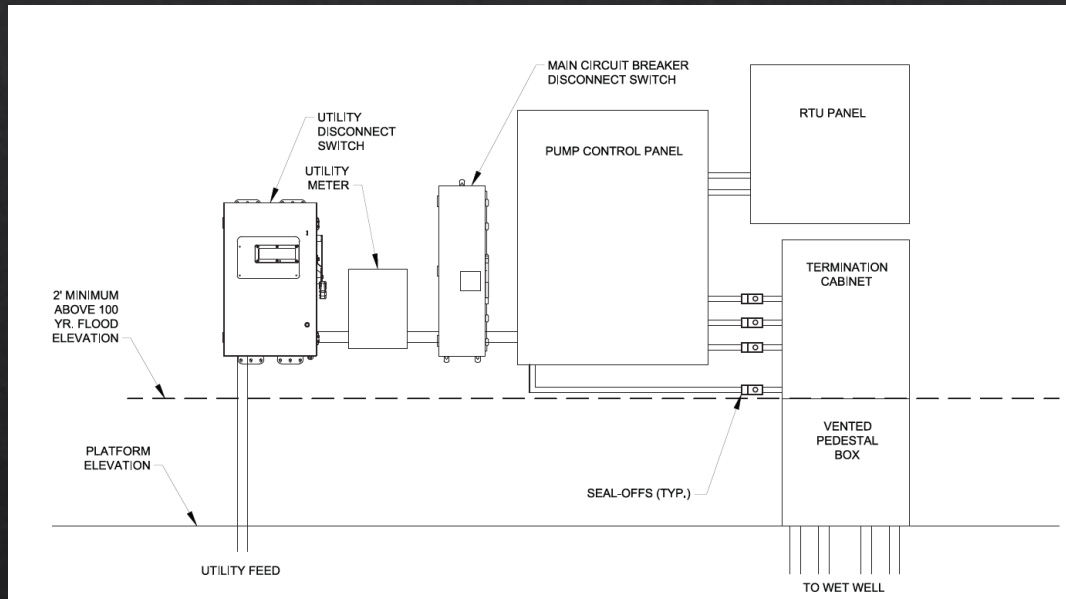
FDEP GRANT HA037 \$9,936,341



- CITY MAINTAINS 164 LIFT STATION WET WELLS AND 140 LIFT STATION CONTROL PANELS
- STORM SURGE DAMAGED MOST LIFT STATION CONTROL PANELS, ELECTRICAL DISCONNECTS, LCEC METERS AND SUPPORTING EQUIPMENT
- INTERRUPTION TO CELLULAR, TELEPHONE, INTERNET AND RADIO SERVICES INCREASED DIFFICULTY OF OPERATING REMOTE SITES AND REPAIR EFFORTS

Lift Station Control Panels

FDEP GRANT HA037 \$9,936,341



480V, 3 PHASE ELECTRICAL RACK LAYOUT

480V, 3 PHASE ELECTRICAL PLAN VIEW

- DESIGN UNDERWAY; CONSTRUCTION START IN FY25